

Specification Sheet



V100 with Pulse Output, Positive Displacement Meter

Waterworks and Low-lead Bronze, External Threaded Spuds

Sizes 5/8" x 1/2" and 5/8" x 3/4"

Description

Operation. The V100, with pulse output (formerly PSM-T), is an oscillating piston style, positive displacement water meter. The product utilizes a piston which water flow causes to rotate in a measuring chamber, each piston revolution being equivalent to a known volume of water. The piston movement is transferred, by appropriate reduction gearing, direct to straight reading liquid-filled fully sealed register.

Compliance to Standards. The meter fully complies with ISO 4064/1 and BS 5728/1 Class B and meets California Proposition 65 requirements. Every V100, with pulse output, is individually tested over its flow range before shipment.

Installation. The meter should be installed in a clean pipeline, free from any foreign materials. Install the meter with the direction of flow as indicated by the arrow cast in the register case. The meter may be installed in any position horizontal, vertical or inclined without affecting accuracy. However, the meter must have a full pipe of water to operate properly.

Application. The meter is for use only in POTABLE COLD WATER up to 120°F and working pressure up to 150 psi.

Construction. The measuring chamber case houses the oscillating piston measuring chamber and a polymer strainer. The measuring chamber is a bottom-in and top-out design consisting of a measuring chamber with division plate and thrust bearing insert, a grooved piston, a

Specifications

	Sizes:	5/8" x 1/2"	5/8" x 3/4"
<u>Performance</u>			
Starting Flow		1/50	1/50
95% - 100% Accuracy GPM		1/8	1/8
95% - 101% Accuracy GPM		1/4-20	1/4-20
Continuous Flow (gpm)		15	15
Maximum Flow (gpm)		20	20
Max Continuous Flow (gpm)		20	20
Head Loss at Max Flow (psi)		under 13.0	under 13.0
Max Working Pressure (psi)		150	150
Max Working Temperature °F		120	120

Capacity of Register

US Gallons	10,000,000	10,000,000
Cubic Meters	10,000	10,000

Register Type

Fully sealed, vacuum-filled straight reading direct drive.

Output Pulse

US Gallons	1 pulse = 5 USG (both sizes)
Cubic Meters	1 pulse = 5 liters (both sizes)

Reverse Flow Restrictor

Available upon request

Materials

Body	Waterwork or Low-lead Bronze
Working Chamber	Compounded Thermoplastic
Piston	High Impact Polymer
Division Plate	Loaded Nylon
Thrust Bearing Insert	Loaded Nylon
Strainer	Polypropylene
Register Case and Lens	Polypropylene
Gaskets	Neoprene Rubber

chamber cover including the drive assembly and a cover locator pin. The sealed register is liquid-filled and free from condensation and tampering. The polycarbonate register case has a magnified lens enlarging the totalizer numbers for easy reading. The meter flow direction arrows are cast on the register case. The unit of measurement is shown on the underside of the lens cover. A serial number is inscribed on the case or the lens cover, which is hinged toward the outlet of the meter. The register case is machined to accommodate a probe which when inserted, magnetically actuates a sensor. The sensor can be used to operate a remote counter or may be interfaced with data-carrying devices for off-site or automatic meter reading.

Register. The combined register and gear unit is fully sealed, liquid-filled with a simple straight-reading presentation. The unit has a reliable direct drive assembly and gears are manufactured in engineered thermoplastic to give minimum friction for extended life.

Tamperproof. The V100 with pulse output offers outstanding resistance to illegal tampering. Its unique in-line body design means it cannot be dismantled while in service and the mechanically driven counter cannot be interfered with magnetically. An individual serial number is engraved on each body.

Dimensions (Inches)

Meter Size	Length A	Width B	To Center C	Weight (lbs.)
5/8 x 1/2"	4 1/2	3 5/16	1 5/8	2
5/8 x 3/4"	4 1/2	3 5/16	1 5/8	2

Coupling Dimensions (Inches)

Meter Size	5/8" x 1/2"	5/8" x 3/4"
Coupling Size	1/2	3/4
Tailpiece Length	2 3/8	2 1/2
Tailpiece Threads	1/2	3/4
Coupling Nut Threads	3/4	1

Connections. Meter casing spuds have external straight threads conforming to ANSI B.2.1. Bronze coupling nuts and tailpieces are available.

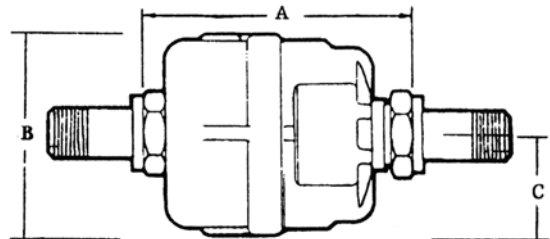
Maintenance. The measuring chamber can be easily removed for repair or replacement. Pretested measuring chamber assemblies are available for exchange or purchase. In addition, AMCO WMS maintains a fully equipped and staffed repair facility in Ocala, FL.

Output-Pulse. The pulse unit may be installed at any time as the unit is a plug in type device. The transmitting element is a dry contact reed switch rated to 3 watts which is magnetically actuated. This device has two wires, which require power from an external source. To be wired in series. Note: 4-wire system, contact AMCO WMS for wiring information.

How to Read V100 with Pulse Output. Direct reading V100 with pulse output totalizers are read exactly as indicated on the numbers from left to right similar in fashion to reading the odometer representing miles in a U.S. automobile. Reading the small horizontal lines (if present) on the first number wheel from the right is omitted except when comparing water throughput into calibrated tank or through a test meter.

The first number wheel on the right advances one (1) number for each unit of measurement and ten (10) numbers for one complete revolution as follows:

Measuring (Calibration)	Each Number Equals	Each Revolution Equals
Gallon	1	10
Cubic Meter	1/1000 or 1 liter	1/100 or 10 liters



The company's policy is one of continuous product improvement and the right is reserved to modify the specifications contained herein without notice.

©2004 AMCO Water Metering Systems Inc. All rights reserved.



AMCO Water Metering Systems Inc.

www.amcowater.com

United States

AMCO Water Metering Systems
P. O. Box 1852
Ocala, FL 34478-1852
352-732-4670 FAX 352-368-1950
Outside Florida: 800-874-0890
Inside Florida: 800-356-6829
e-mail:
watermeters@amcowater.com

Canada

Elster Metering
1100 Walker's Line, Suite 101
Burlington, Ontario L7N 2G3
866-703-7582
905-634-4895
FAX 905-634-6705
e-mail:
watermeters@ca.elster.com

Caribbean

AMCO Water Metering Systems
P. O. Box 225
Carretera 112 KM 2.3
Isabela, PR 00662
787-872-2006
FAX 787-872-5427
e-mail:
prwatermeters@amcowater.com

Mexico

Elster Medidores
Lago Omega #281
Col. Modelo Pensil.
Del. Miguel Hidalgo
C P 11460
525 55 203 8002
FAX 525 55 203 8270
e-mail:
amcowater@prodigy.net.mx

V100-PUL-100/04-04